

Kvalitetssikring af etiketter og tryk på produkter



17%



Presented by: Henrik Hansen, Direct Sales Account Executive, Wonderware Scandinavia

Claus Sass Hvass, Business Director, Eltronic A/S

Contents

- Introduction to Eltronic & Wonderware
- Label Assurance
- Life Sciences Serialization Suite



About Eltronic

- ▶ Eltronic is a knowledge-based business founded in March 2000. In 17 years, the company has grown rapidly, and we now employ 300 employees working within three divisions – Production Systems, Wind Solutions and FuelTech.
- ▶ Our engineers have deep multidisciplinary skills that cover all aspects of technology development and business understanding, and we are privileged to have specialists and project managers in all areas.
- ▶ Eltronic is a solid company, which is AAA-rated. This ensures that Eltronic is a serious partner – also in the future.



INDUSTRIAL INNOVATION

HEAVY INDUSTRY

IT & AUTOMATION

PRODUCTION TECHNOLOGY

DATA INTELLIGENCE

INDUSTRIAL SERVICE & ASSEMBLY



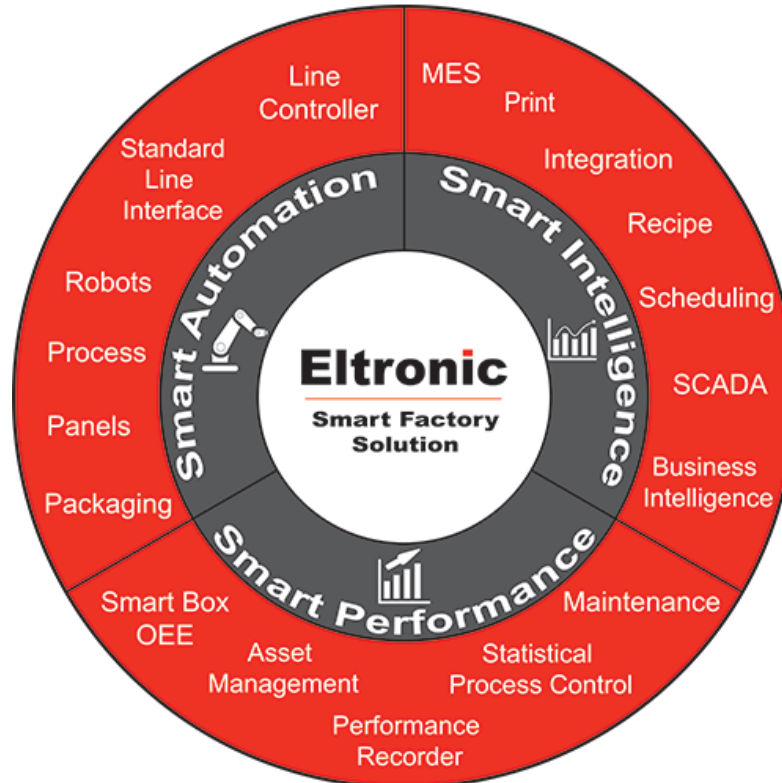
IT & Automation

Eltronic is one of the largest automation companies in Denmark, with:

- Project Managers
- Architects
- Developers



The large number of highly skilled employees and strategic partnership with suppliers, ensure that Eltronic always is up to date with the newest technologies.





EcoStruxure™

Innovation At Every Level

Schneider Electric™

Energy
Business

IT
Business

Software

Industry
Business

Partners
Business

Schneider-Electric + 160.000 employees.

The global specialist in energy management and automation.

Wonderware is the global leader in Human Machine Interface (HMI), SCADA and real-time operations management software, MES, MOM (Manufacturing Operations management systems).

2 Million software licenses installed, **+100,000 sites** worldwide

<https://on.wonderware.com/dk>

Eltronic

IT & AUTOMATION

Brands:

- APC
- Lauritz Knudsen
- Merlin Gerin
- Merten
- Pelco
- Square D
- TAC
- Telemecanique
- Wibe
- Elau
- JO-EL
- **Wonderware** / Citect / InduSoft / IGSS/ Proface / 7-Technologies

Wonderware®
by **Schneider Electric**

Life Is On

Schneider
Electric



beans, pulses and wholegrains. Wholegrains are naturally wholesome and form an important part of a balanced diet.

Best Before End 01/2017



Food & Beverage Label Assurance

A solution for ensuring the right product is in the right packaging

Impacts of Wrong Package or Label

Forside

Nyheder

Publikationer


Lovstof

Emneoversigt

Kontakt

English

Ministeriets websites



Miljø- og Fødevareministeriet
Fødevarestyrelsen

Fødevarer

Dyr

Kontrol

Selvbetjening

Dit erhverv

Søg

Min Side

Du er her: Forside > Nyheder > Aktuelt > Æggestand fejlmærket som sky

Print

Læs højt

Del

Æggestand fejlmærket som sky

K.T. Food tilbagekalder Delikatessen's Æggestand, da produktet er fejlmærket som Sky. Produktet indeholder allergenerne æg og mælk, hvilket ikke fremgår af etiketten.

Tilbagekaldte fødevarer, Publiceret: 13. september 2017

Ændret 13. september 2017

Hvilken fødevarer:
Delikatessen's Æggestand
Nettovægt 100 g.
Produktionsdato: 25/08/2017
Pakkedato: 28/08/2017
Holdbarhedsdato: 07/10/2017
EAN stregkode: 5708548000111
Lotnr.:607-1

Solgt i:
COOP Danmarks butikker

Virksomhed, der tilbagekalder:
K.T. Food, Randersvej 147, 8990 Fårup

Arsag:
Produktet er blevet fejlmærket med en forkert etiket. Produktet indeholder allergenerne æg og mælk, som ikke fremgår af den forkerte etiket.

Risiko:
Personer med allergi overfor æg og mælk kan få en allergisk reaktion, hvis de spiser produktet.

Råd til forbrugere:
Rådet er, at levere produktet tilbage til butikken, hvor det er købt, eller at kassere det.

TV2 ØSTJYLLAND[®]

SENESTE NYT | TV | TIP OS

Fare for allergianfald: Æggestand fejlmærket som sky



Et produkt, der indeholder æggestand, er blevet mærket med en forkert etiket. Foto: Colourbox

13. sep 2017 kl. 17:14

→ Østjylland
→ Randers
→ Forbrug
→ Samfund

DEL ARTIKLEN

AF MARIE SVEIGAARD ØDUM

Er du allergisk over for æg eller mælk, og har du for nyligt erhvervet dig en portion sky i supermarkedet, så bør du kaste et ekstra blik på etiketten. Produktet Delikatessen's Æggestand er ved en fejl blevet mærket med en forkert etiket, så det fremstår som værende sky. Produktet indeholder allergenerne æg og mælk, hvilket ikke fremgår af den forkerte etiket. Der er risiko for, at personer med allergi overfor æg og mælk kan få en allergisk reaktion, hvis de spiser produktet. Derfor er Fødevarestyrelsens råd til forbrugerne, at produktet afleveres tilbage til butikken, hvor det er købt, eller kasseres. Det er virksomheden K.T. Food, der ligger i Fårup nordvest for Randers, der tilbagekalder produktet. Det er blevet solgt i COOP Danmarks butikker.

INFORMATION OM PRODUKTET

Delikatessen's Æggestand
Nettovægt 100 g.
Produktionsdato: 25/08/2017
Pakkedato: 28/08/2017
Holdbarhedsdato: 07/10/2017
EAN stregkode: 5708548000111

Market Trend

Causes of Recalls

Recall Summary for Calendar Year 2014			
		Number of Recalls	Number of Pounds Recalled
Total		94	18,675,102
Recalls by Class (N=94)			
Class	I	63	14,261,888
	II	23	3,817,387
	III	8	595,827
Recalls by Reason (N=94)			
Reason For Recall	STEC*	5	1,840,533
	Listeria monocytogenes	7	270,926
	Salmonella	4	372,414
	Undeclared Allergen	43	6,147,288
	Extraneous Material	6	265,607
	Processing Defect	4	59,203
	Undeclared Substance	2	80,084
	Other**	23	9,639,047

Recall Summary for Calendar Year 2015			
		Number of Recalls	Number of Pounds Recalled
Total		150	21,104,848
Recalls by Class (N=150)			
Class	I	99	16,623,878
	II	39	3,176,212
	III	12	1,304,758
Recalls by Reason (N=150)			
Reason For Recall	STEC*	8	215,593
	Listeria monocytogenes	6	82,547
	Salmonella	3	4,828,874
	Undeclared Allergen	58	10,268,457
	Extraneous Material	11	1,104,790
	Processing Defect	4	5,259
	Undeclared Substance	5	1,176,731
	Other**	55	3,422,597

Recall Summary for Calendar Year 2016			
		Number of Recalls	Number of Pounds Recalled
Total		122	58,140,787
Recalls by Class (N=122)			
Class	I	91	56,464,938
	II	26	1,063,553
	III	5	612,296
Recalls by Reason (N=122)			
Reason For Recall	STEC*	14	291,900
	Listeria monocytogenes	11	47,398,141
	Salmonella	2	19,287
	Undeclared Allergen	34	843,536
	Extraneous Material	21	6,372,416
	Processing Defect	5	1,999,078
	Undeclared Substance	7	662,595
	Other**	28	553,834

Source: United States Department of Agriculture – Food Safety and Inspection Service

Cause	Number of Recalls
Wrong package or label	82
Terminology	59
Failure to carry forward information from an ingredient to final label	41
Cross-contact	28
Ingredient mislabeled from supplier	21

Table 3: Causes of Food Allergen Recalls

Source: Food Safety Magazine – Learning from FDA Food Allergen Recalls and Reportable Foods

- Rising Recalls, undeclared allergen is the number 1 reason for past 3 years.
- Wrong packaging or label as main reason of undeclared allergen.
- 35% of these recall could be prevented with Label Assurance solution.

How does Label Assurance helps?

Heinz recalls gravy for label errors, undeclared allergens

BY NEWS DESK | NOVEMBER 23, 2016

Following a consumer complaint, H.J. Heinz Co. is recalling about 5,000 pounds of bistro au jus gravy from more than 1,000 retail locations nationwide because it is incorrectly labeled as pork gravy and has undeclared allergens, according to the U.S. Department of Agriculture's Food Safety and Inspection Service (FSIS).

The au jus gravy product contains milk and soy, known allergens, which are not declared on the incorrect labeling for pork gravy. Neither FSIS nor the Muscatine, IA-based company said why the recall, initiated on Nov. 19, went unannounced for three days.

The au jus gravy labeled incorrectly as pork gravy was produced June 4. Consumers, retailers and distributors can identify the recalled product by the following label information:



- 558 cases each containing of one dozen 12-ounce jars of "HEINZ HOMESTYLE BISTRO AU JUS GRAVY" that is mislabeled with Homestyle Pork Gravy labels.
- The recalled jars have "Best By 12/28/2017 MU6Fo4" on their caps and the cases have "Case Best By 12/28/17 MU6Fo4" on their labels.

The recalled products have the establishment number "M2041" in the USDA mark of inspection. These items were shipped to a distributor and to retail locations nationwide.

The problem was discovered by the company on Nov. 17 after they were notified by a customer that a jar labeled as "Heinz Homestyle Pork Gravy" looked darker than expected, according to the recall notice. The company determined the mislabeling incident occurred on June 4 when a box of labels for the company's "Heinz Homestyle Pork Gravy" product was taken to the processing line and used during the production and packaging of the au jus gravy.

- Human dependent / manual check
 - packages look similar
 - employee dependent
 - roll of labels for each product or
 - difficult to distinguish
 - they are handled in
 - operation **change**, especially operation
 - in production, increase the chance of error
- Packaging material supplier fault
 - Package and film roll
 - involves **splice**
 - reels for
 - W
 - 1 / reel of

100% online, non-destructive,
automated label check

100% online, non-destructive,
automated label check

How does Label Assurance helps?

Campbell's recalls chicken soup for undeclared milk allergen

BY NEWS DESK | APRIL 23, 2017

Consumer complaints spurred Campbell Soup Co. to recall 4,185 pounds of chicken soup products due to misbranding and undeclared allergens, the U.S. Department of Agriculture's Food Safety and Inspection Service (FSIS) announced Saturday. The products contain milk, a known allergen, which is not declared on the product label.

The chicken with whole grain pasta soup items were produced on Feb. 13, according to the recall notice. They can be identified by the following label information:

- 18.6-oz. cans of "Campbell's Homestyle Healthy Request Chicken with Whole Grain Pasta" with Best By date of Feb. 13, 2019, on the bottom of the cans.

The products subject to recall bear establishment number "EST. 4R" on the bottom of the cans. These items were shipped to retail locations in Florida.

The problem was discovered on April 20 when the firm received notification from their corporate office of multiple consumer complaints of the wrong product noticed inside the cans. The products were labeled as "Campbell's Homestyle Healthy Request Chicken with Whole Grain Pasta" but actually contain "Campbell's Homestyle Healthy Request Italian-Style Wedding Spinach & Meatballs in Chicken Broth" soup.



- Limitation of quality check and production inspection
 - First-off inspection: **simple** check for all changeovers and stop for human dependence
 - Quality check: **simple** check for mistakes, not for order and
 - **100% online, non-destructive, automated label check**
 - **not have enough human** check **frequency**, do not have equipment to conduct **continuous** check.

- Point system that does not work as
 - Inkjet coders
 - **Extensible, and can be integrated to existing MES to form fully automated Label checking system**
 - **greater risk** to

Label Assurance

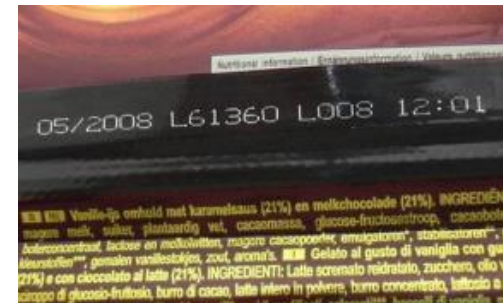
- Right product in the right packaging



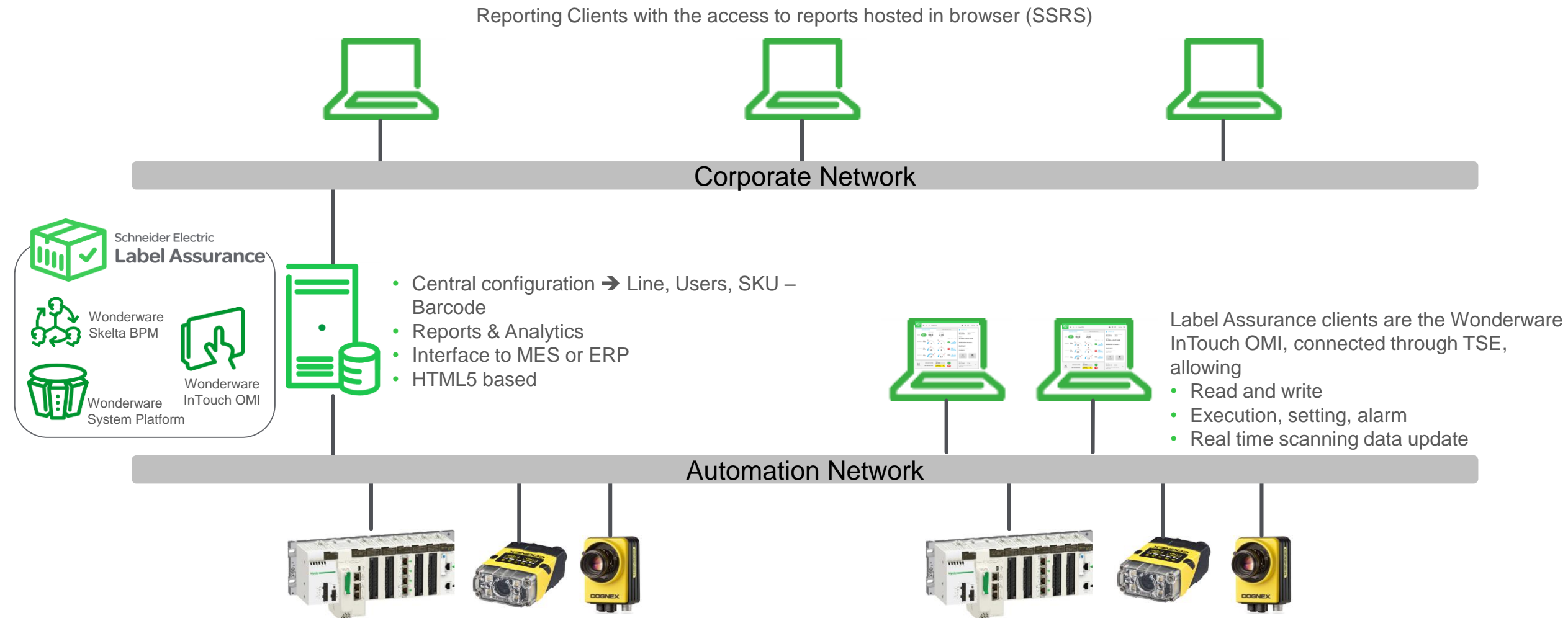
What is the Solution?

Label Assurance is a software solution for inspection and validation of printed labels against their intended SKU, helping Food & Beverage manufacturers to ensure the right product is in the right packaging.

- 100% scanning of packaging barcode & data matrix OR / AND best before date + Batch / Lot Code of the package.
- To ensure right product in the right packaging.
- Code scanning, not printed code verification.
- Developed based on Cognex Camera.
- Work by integrating into packaging line.

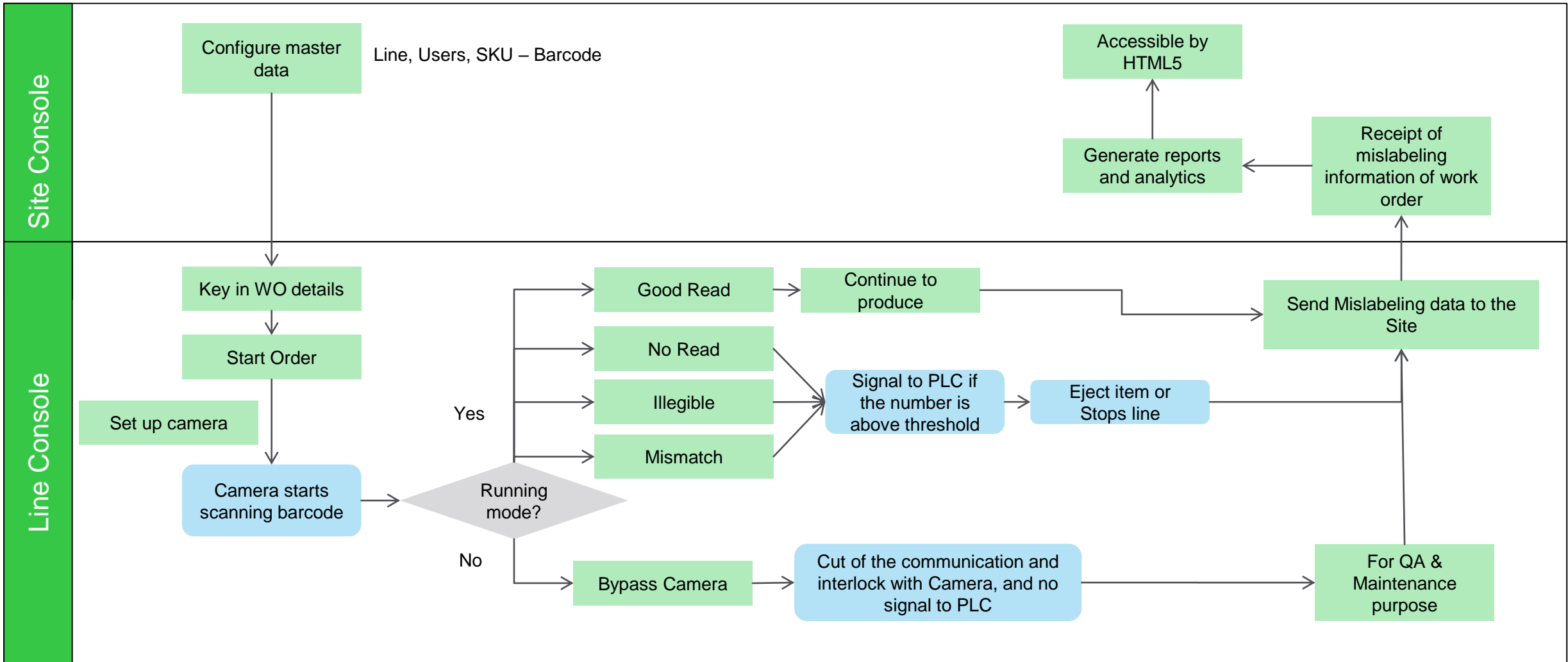


Reference Architecture



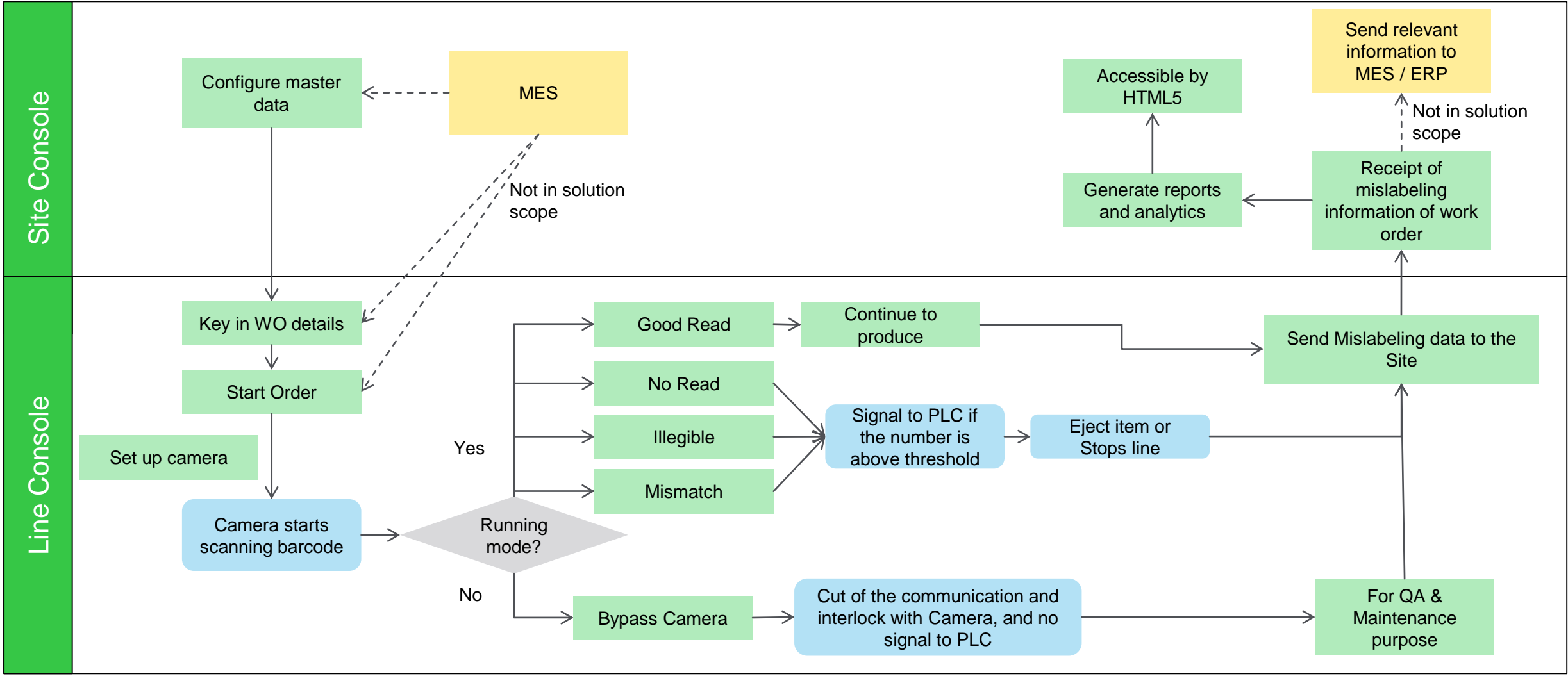
Solution Flow

Work as Standalone Quality System

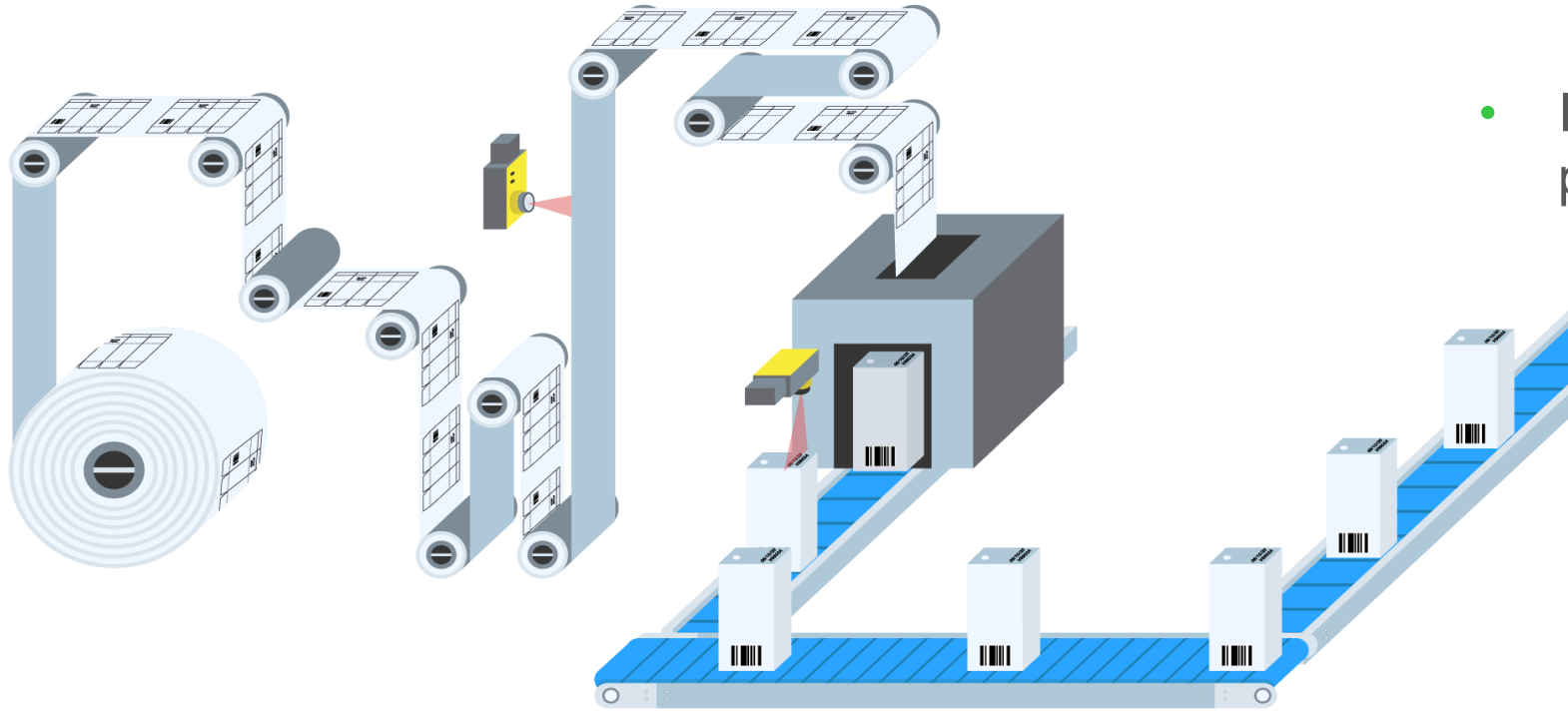


Solution Flow

Integration with MES



Typical Application



- Roll or reel based pre-printed paper packaging or label film
 - Wrappers
 - Doy-packs / pouches
 - Sachets
 - Stand-up pouches
 - Material on reel
 - Sleeved bottles / jars / cans
 - Self-adhesive labels on reel

Labels on pre-printed paper packaging in single reel

Reliable Scanning Capability and Performance

Work with market leading camera - Cognex



- Scan Barcode and also Data Matrix in high speed.
- Code scanning, not printed code verification.



- Scan Batch / Lot Code & Best-Before-Date.
- OCR – Optical Character Recognition up to 600 units per min

Eltronic

IT & AUTOMATION

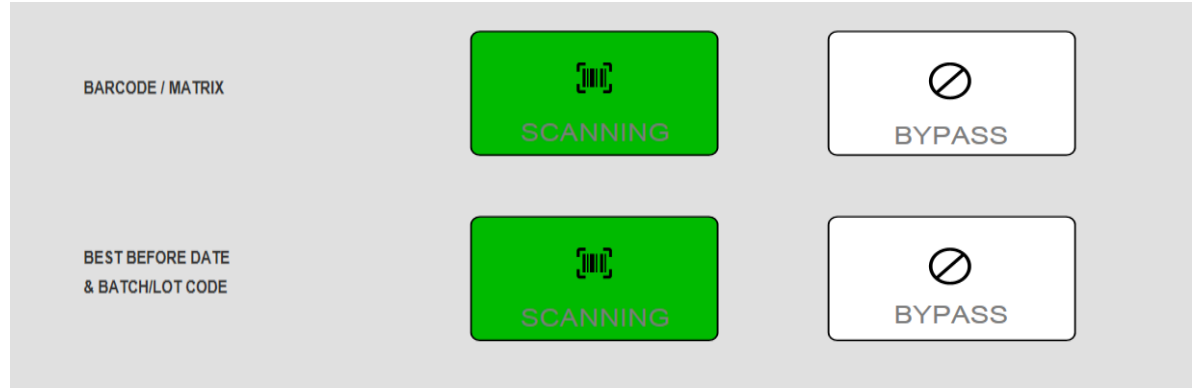
Life Is On

Schneider
Electric

Tight Integration with Camera

Camera control & monitoring

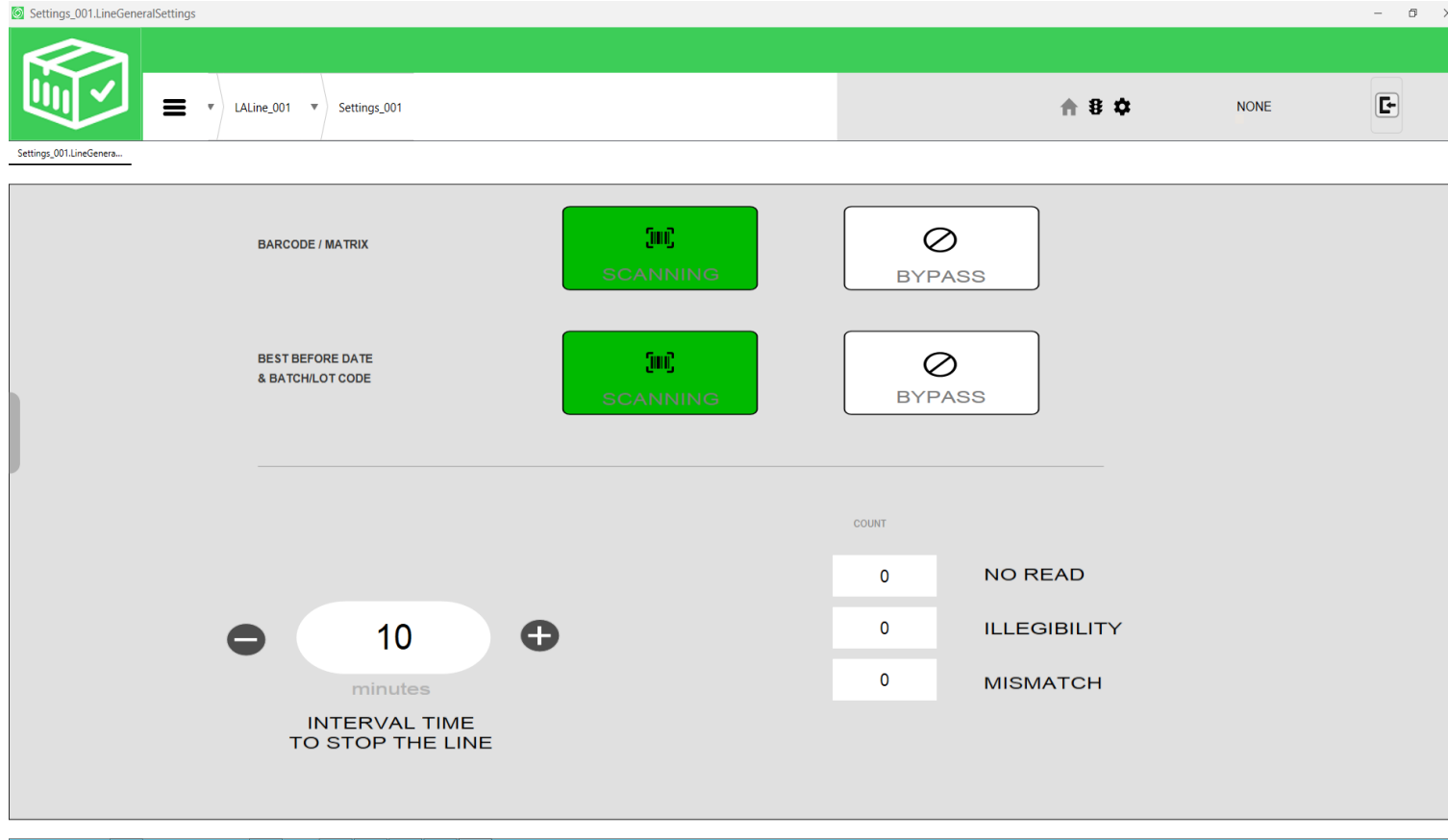
- Scanning mode for label scanning operation
- Bypass mode to cut off the camera from the system and corresponding PLC communication for quality and maintenance purpose



- Continuous monitoring on
 - Camera hardware status
 - Camera communication status
 - Camera job setting
- Alarm if any fault or error is detected.

Full Label Check & Non-Compliance Containment

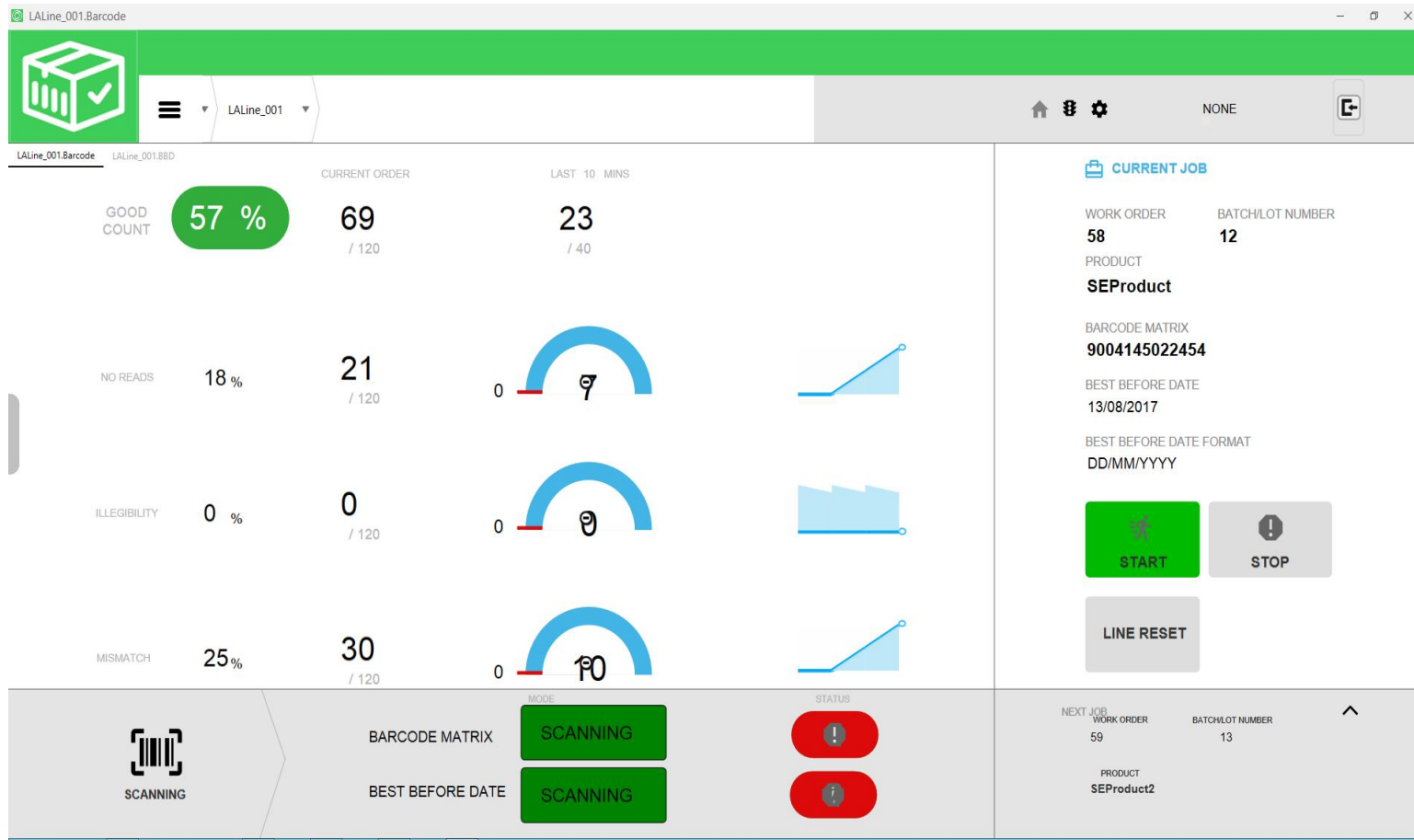
100% check and flexibility on containment



- Scan every items passing through the packaging line – non-destructive, automated, live.
- Conditions can be set to trigger the machine action on non compliance:
 - time interval for the trigger
 - number of no read
 - number of illegibility
 - number of mismatch
- Signal to PLC will be triggered if the number of non-compliance is higher than setting for the given time interval.

Real Time Scanning Data Update & Allocation

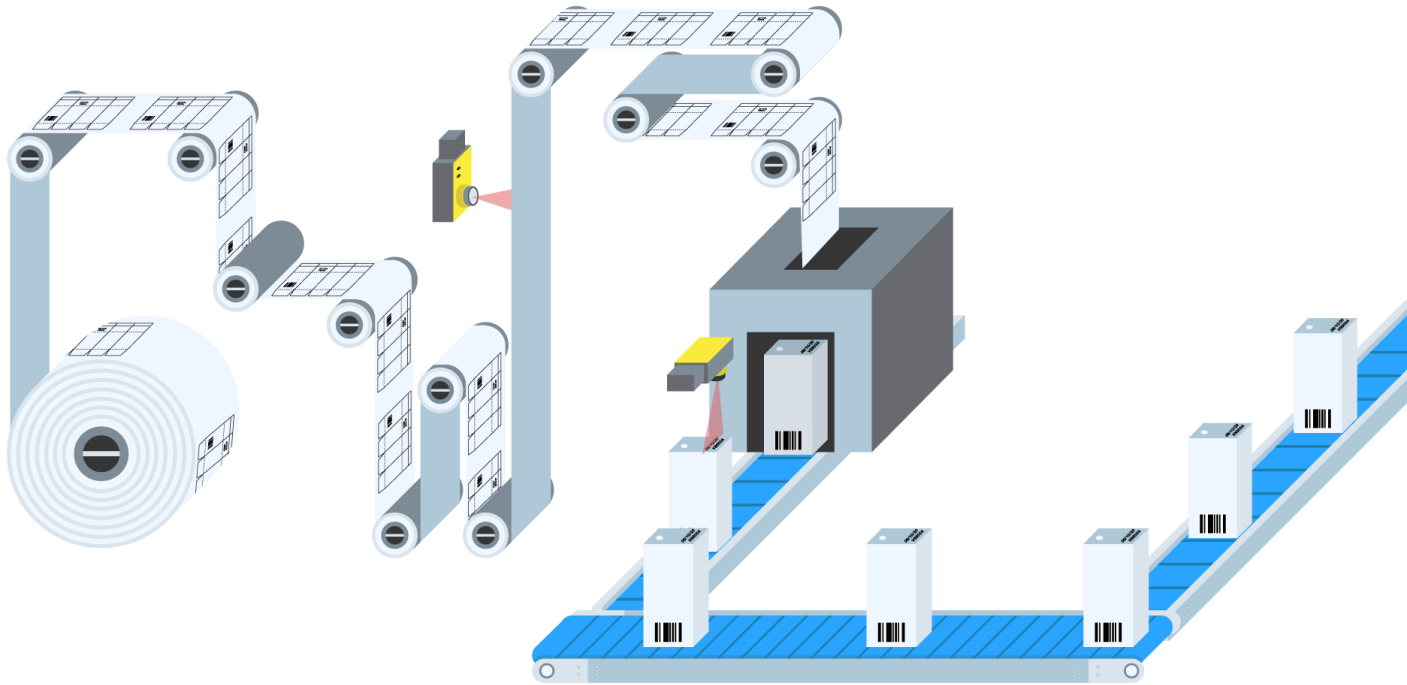
Understand labeling performance & trend on work order & products



- Scanning data is updated real time
- Current status and trend to understand the operation performance.
- Scanning data is linked to the work order, batch / lot code, and products.
- Production details can be key in manually or get direct from MES.

Minimum Hardware Involvement

Leveraging existing packaging line, PLC & printers



- The solution is designed to be integrated into existing packaging line.
- Label Assure Software Solution + Cognex cameras to enable the full label scanning capability, leveraging existing packaging line, its PLC and printers.
- Need not to purchase a separate full label scanning station.



Life Sciences Serialization Suite

What is Serialization?

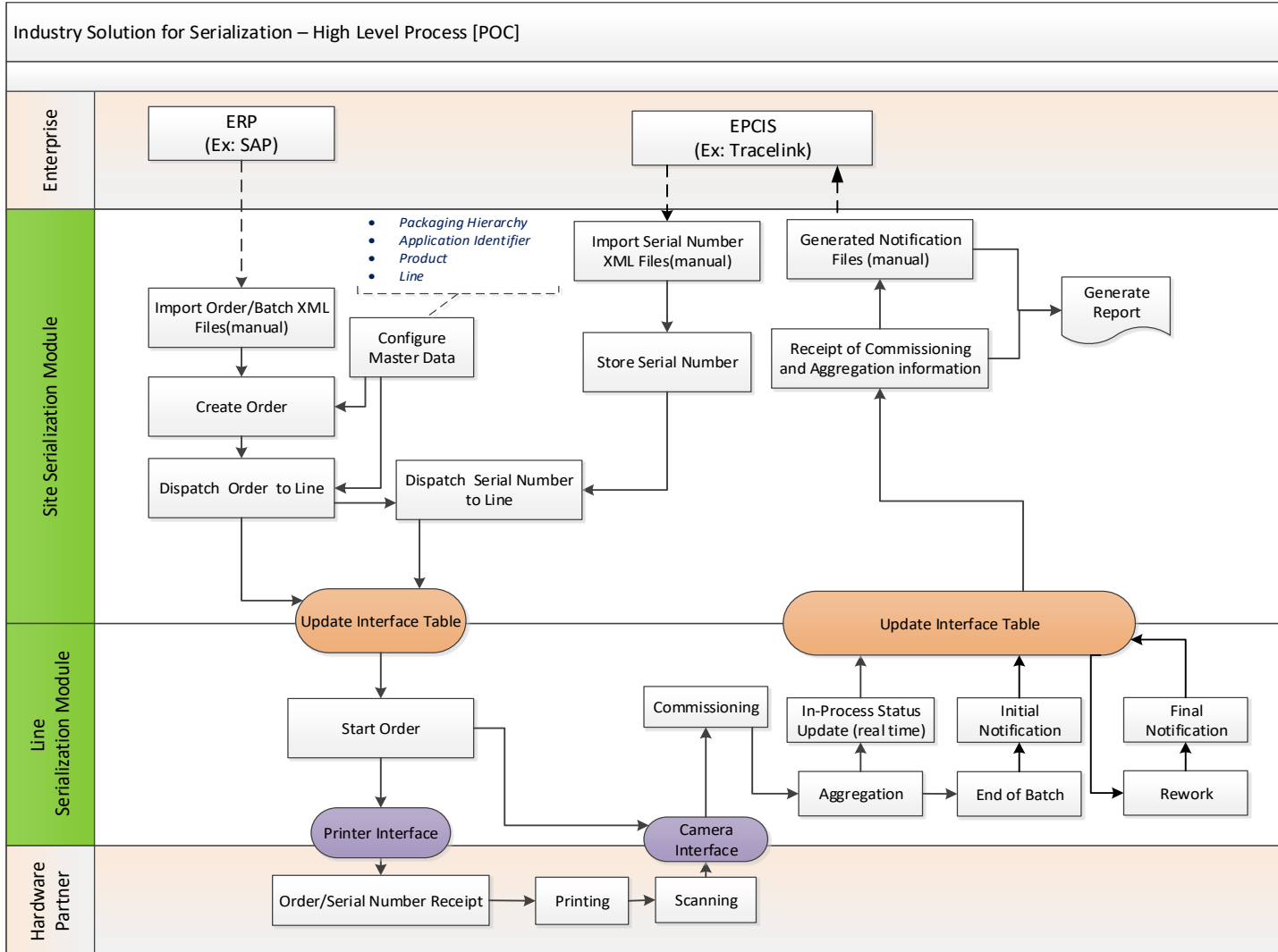
European Union sets February 2019 for serialized authentication of pharma products

- The majority of the world requires serialization of products according to the GS1 standard of a 2D barcode.
- Serialization and Product Track and Trace are often used interchangeably, but in order to track and trace, the entity needs to be first serialized.
- Various country regulations required one or more of the following
 - **Serialization:** Assigning unique identity numbers
 - **Track and Trace:** Following the movement of product across supply chain
 - **Verification:** Verification of serial numbers at one or more hops of the supply chain to ensure legitimacy
 - **Reporting:** Report arrival of drug at key milestones to the government and to supply chain partners



Solution Flow

OOTB Central Configuration,
Serial Number & Order
Management



Flexibility in Deployment

Standalone or Integrated system

- Can be deployed as standalone quality system.
 - manual entry of production details.
 - manual start stop.
 - scanning data is kept in solution database.
- Can be part of the MES system, which automated the whole label scanning
 - automated production details passing down from MES.
 - automated scanning data passing up to MES
 - automated start and stop scanning with MES work order start-stop.
- Tight Wonderware MES database alignment
 - naming convention
 - data type
 - characters limit



Contact Information

Eltronic
IT & AUTOMATION

Claus Sass Hvass
Business Director

Phone: +45 5156 8759
E-mail: cs@eltronic.dk
www.eltronic.dk



Eltronic A/S · Kilde Alle 4 · DK-8722 Hedensted · Denmark · Tel. +45 76 74 01 01

Henrik Hansen
Direct Sales Account Executive

Mobil: (+45) 2630 0788
Henrik.Hansen@schneider-electric.com

Wonderware Scandinavia
c/o Schneider Electric Danmark A/S
Lautrupvang 1
DK-2750 Ballerup
(+45) 4488 5660
www.wonderware.dk

Wonderware
by Schneider Electric

